

# Shelburne Village

at Camelot

**CAREFREE LUXURY**  
 Home prices start at \$550,000  
*Grounds & Lawn Maintenance Living-provided by HOA*

Seeking simplification of life? You Deserve It. Hand-crafted by the best, Shelburne Village at Camelot is convenient to Winston-Salem's All. Enjoy entertaining family and friends in Charleston Style courtyard living. Luxurious amenities abound and endure through the years. There is exquisite taste and originality at every turn. Custom designed homes by Homes by Jonathan Lee is a true treasure. Transitional interiors speak of today's lifestyle with open floor plans and main level living, while traditional brick exteriors lend an air of permanence. Set in one of the most prestigious areas of Sherwood Forest, the location is perfect. Hurry only 6 lots left!

### Amenities:

- Optional New Sherwood Pool and Tennis membership  
 (www.newsherwoodpool.com)
- Muddy Creek Greenway
- Village Green, Sidewalks, Decorative Street Lights, Tree Lined Streets

*\*Building Restrictions: Subject to all house plans being approved by the developer*



Available for custom home  
 New Home for Sale

EXCLUSIVE BUILDER

Homes by Jonathan Lee

Shelburne Village  
 at Camelot

ENERGY STAR  
 CERTIFIED  
 BUILDER



GLOBAL  
 LUXURY



Dee Priddy

(336) 692-4289  
 Dee.Priddy@ColdwellBanker.com  
 DeePriddyRealtor.com

Each Office is Independently Owned and Operated.





5149 Palmerston Lane, Winston-Salem, NC 27104



This fine home plan is offered exclusively by:

*Homes by Jonathan Lee, Inc.*

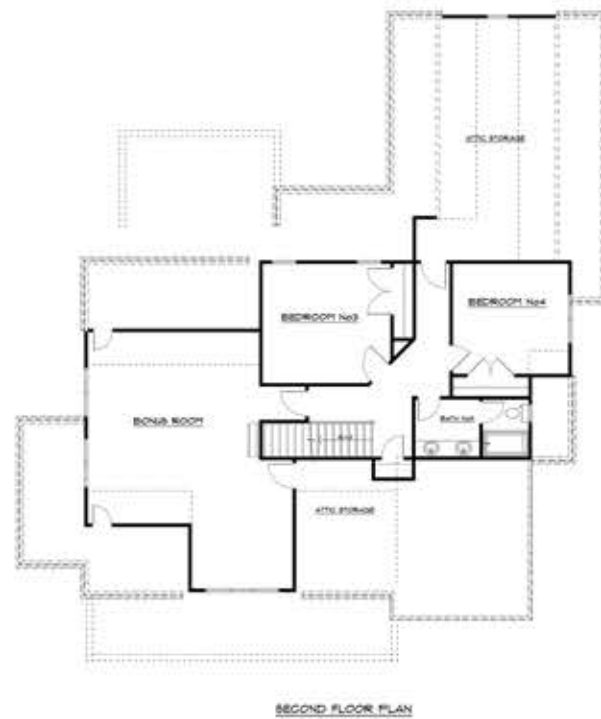
2235-C Lewisville-Clemmons Road  
Clemmons, NC 27012  
(336) 766-7715  
www.homesbyjlee.com

Total Heated Space: 3423 sq ft

Main Floor 2194 sq ft  
Second Floor 688 sq ft  
Bonus Room 541 sq ft



MAIN FLOOR PLAN



SECOND FLOOR PLAN



5149 Palmerston Lane, Winston-Salem NC 27104

**ENERGY STAR CERTIFIED**

4 Bedrooms + Bonus 3 1/2 Baths

**\$675,000**

**INTERIOR:**

- Master suite on main level with luxury bath featuring dual sink vanity, separate tile shower, soaking tub, separate water room and large walk-in closet that leads to laundry room followed by drop zone.
- 2nd Bedroom on main level with full bath.
- Open floor plan to great room, kitchen and breakfast room offering an abundance of natural light.
- Spacious kitchen with oversized island and an abundance of counter space with neighboring breakfast room.
- 10 ft. ceilings on main level, 9 ft. ceilings on upper level and 8 ft. doors throughout.
- Beautiful 4" character grade white oak wood floor throughout the main level and staircase.
- Custom trim and molding throughout including stunning built-ins and mantel surrounding the fireplace in great room.
- Beautifully designed custom cabinetry and tile in kitchens and baths accented by gorgeous granite and quartz countertops.
- 2nd floor features 2 bedrooms, full bath with separate water room, oversized bonus room, linen closet and 2 areas of walk-in floored attic storage space.

**EXTERIOR:**

- Chesapeake Pearl brick with white mortar accented by Board & Batten siding on gables and dormers with custom raised panel shutters.
- Brick front walkway leads to large front porch floored with brick pavers and double columns to inviting mahogany front door.
- Relaxing covered rear porch leads to decorative circular patio surrounded by a bricked-in courtyard offering 2 enhancing gates.
- Sprinkler system
- Oversized rear entry 2 car garage off private alleyway.

Homes by Jonathan Lee has been building award-winning new homes and custom homes since 1995. Homes by Jonathan Lee offers expertise in all aspects of the home-building process, including floor plans, design, modern systems, appliances, outdoor features, landscaping, budget and financing.

Solid craftsmanship, superior materials and fine details are hallmarks of Homes by Jonathan Lee.

OUR TEAM WILL COLLABORATE WITH YOU THROUGHOUT THE BUILDING PROCESS, TO CREATE A HOME THAT MEETS ALL YOUR EXPECTATIONS – AND ONE THAT WILL PROVIDE ENJOYMENT AND RETAIN IT'S VALUE FOR MANY YEARS TO COME.